

Saliva Drug Panel

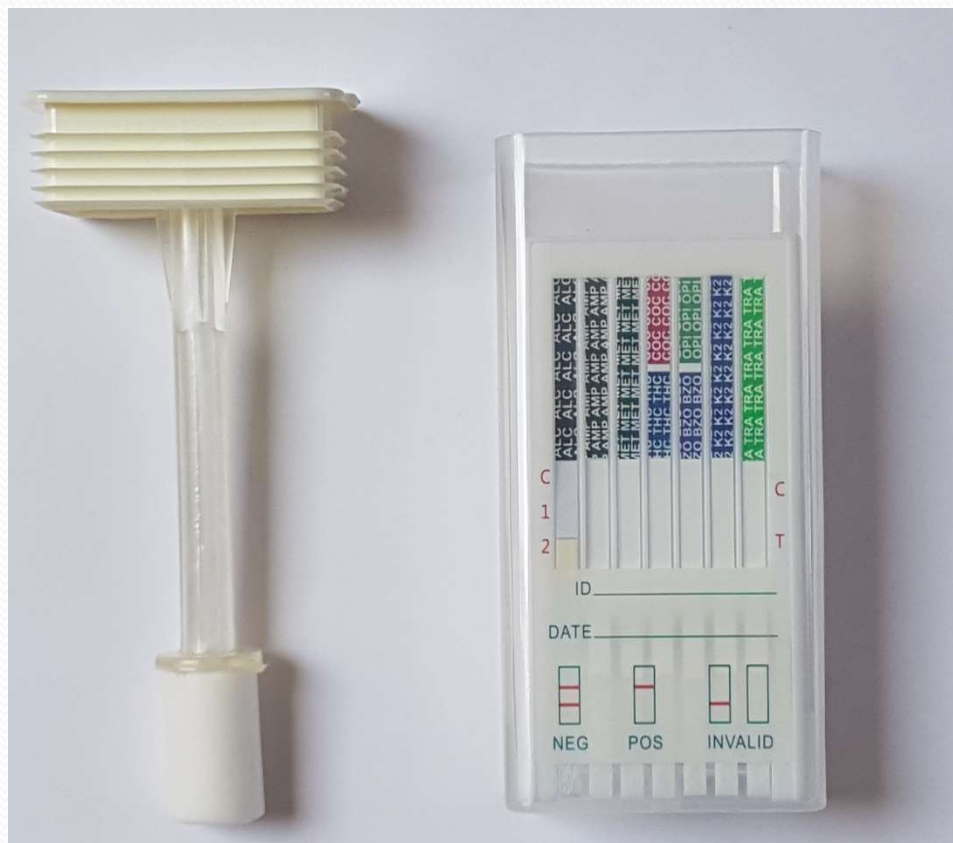
- Drugs of Abuse Test
- Methamphetamines/Ecstasy (ME)
- Cannabis (THC)
- Cocaine (COC)
- Amphetamines (AMP)
- Opiates (OPI)
- Benzodiazepines (BZO)
- Tramadol (TRA)
- Spice/K2 (Synthetic Cannabis)

8 Panel Test

Each individual test strip will indicate a presumptive “positive” result for that particular drug.

If no control line “C” is formed then the test is not useable.

Most common issue is storing the test kits in too high a storage area. Do not keep the kit in your car.



Saliva Volume Indicator

Turns red when sufficient fluid has been collected

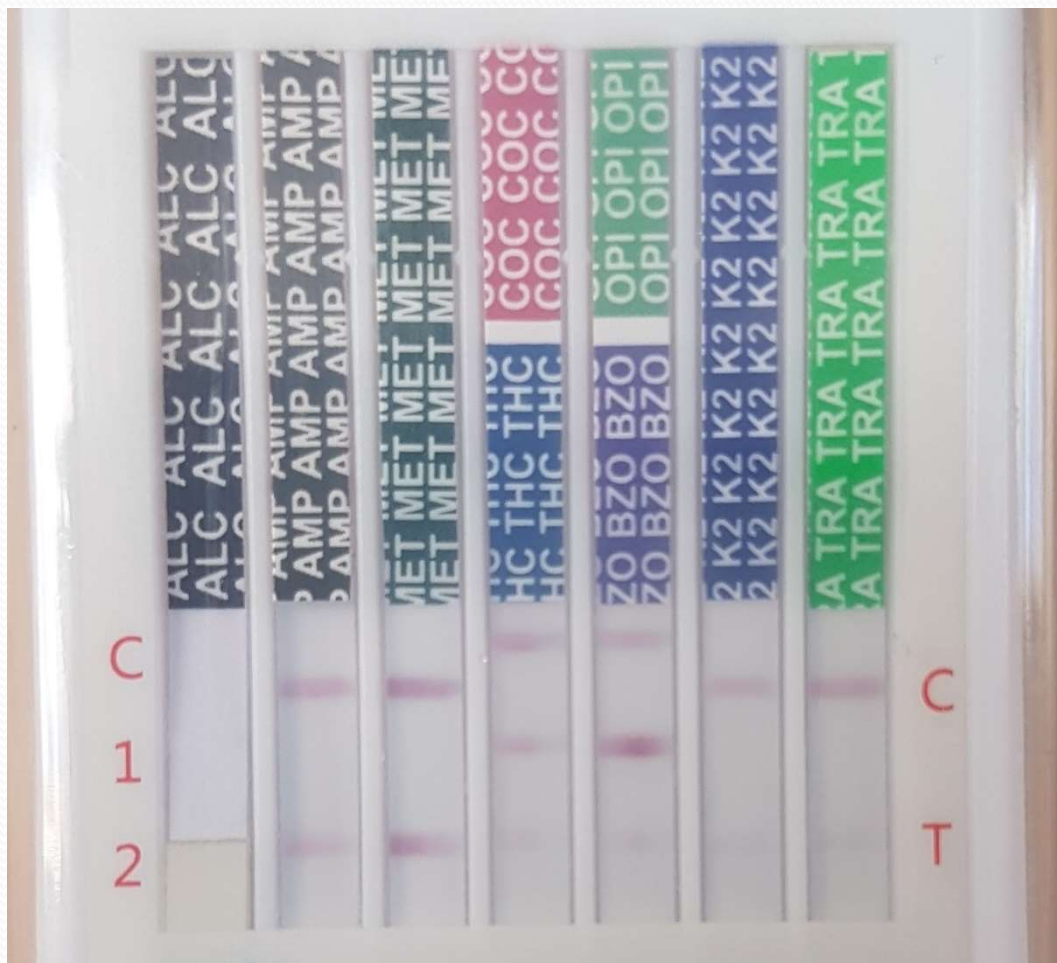


8 Panel Test

Each individual test strip will indicate a presumptive “positive” result for that particular drug.

If no control line “C” is formed then the test is not useable.

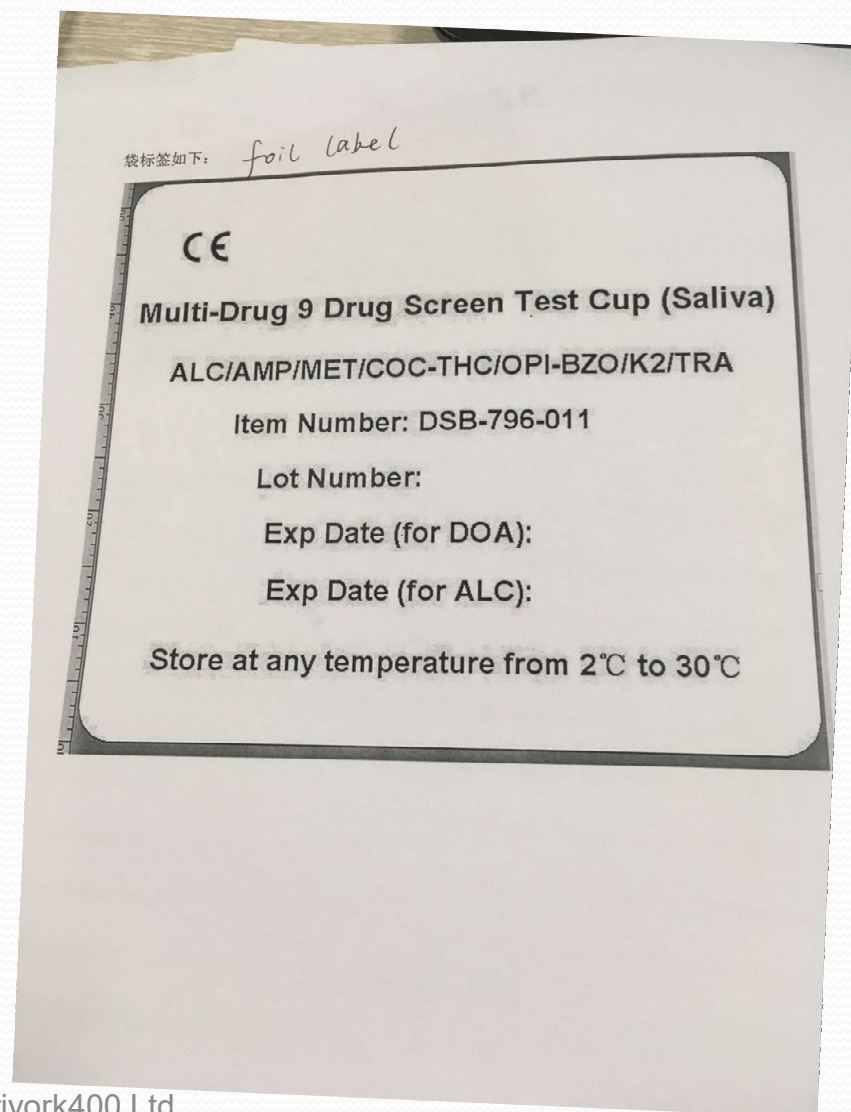
Most common issue is storing the test kits in too high a storage area.



Invalid

When possible, always let the donor confirm validity date and let the donor select the test pouch.

Two different dates as the alcohol test and drug tests are different.



8 Test Plus Alcohol Foil Pouch

Alcohol

Amphetamine

Methamphetamine/MDMA

Cocaine

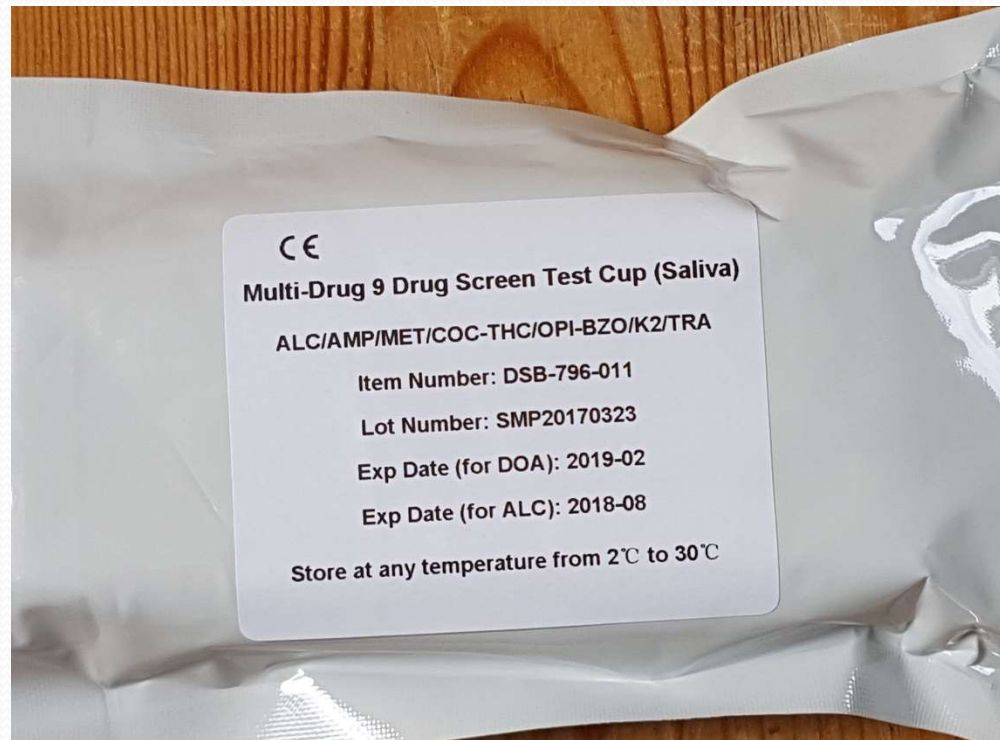
THC (Cannabis)

Opiates

Benzodiazepines

K2 – Spice

Tramadol



8 Drugs on 5 Strips

Alcohol Strip on the Left – No Control Line

AMP Single Strip

Methamp Single Strip

THC and COC Double Strip

Benzo and Opiate Double Strip

K2 Single Strip

Tramadol Single Strip



Collection Swab

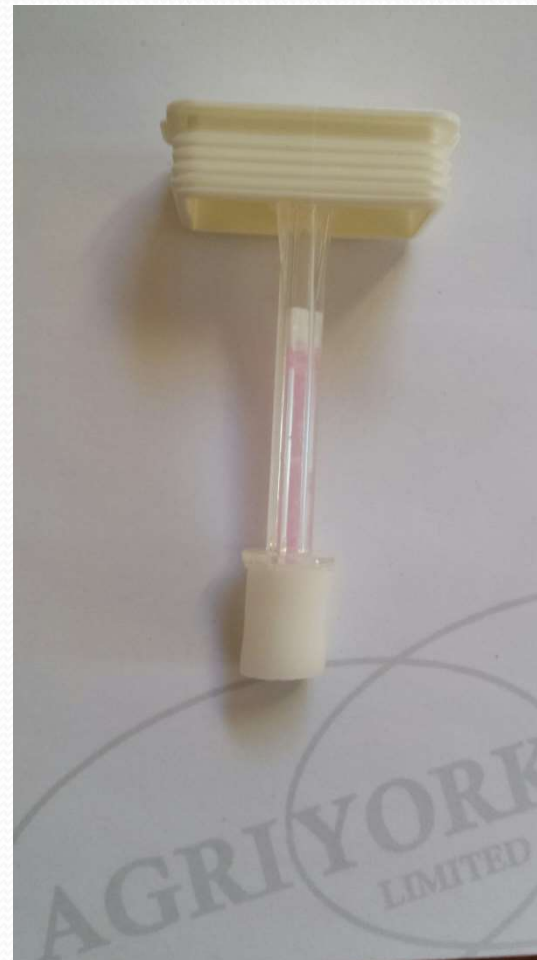
One millilitre of oral fluid is collected

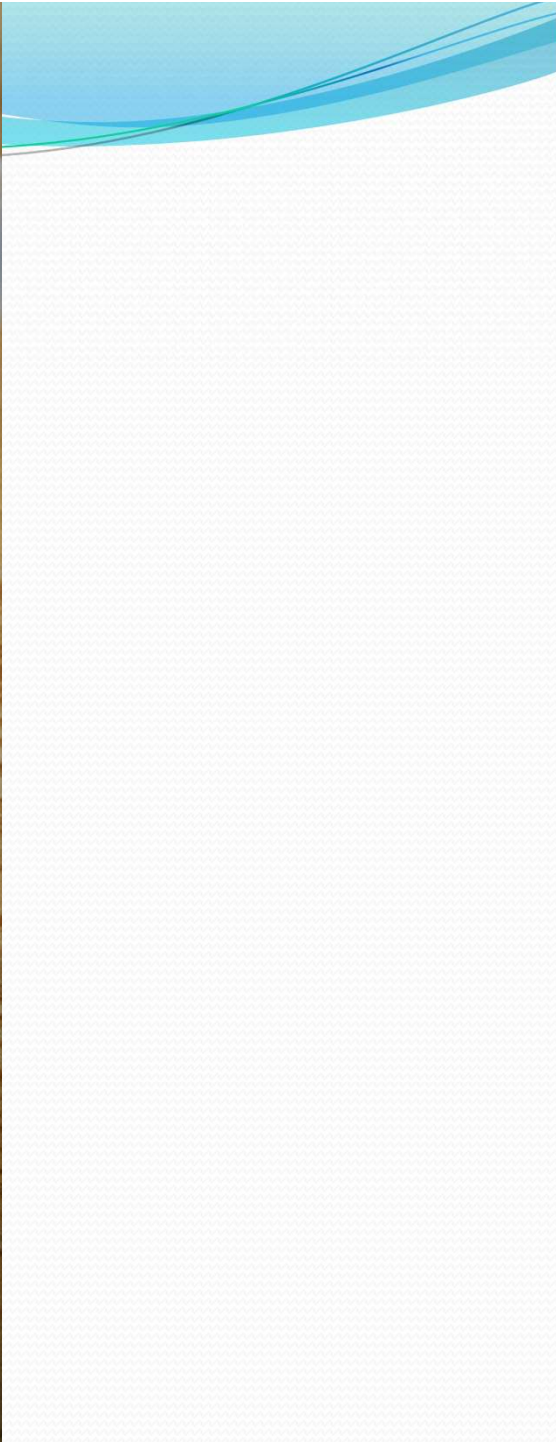
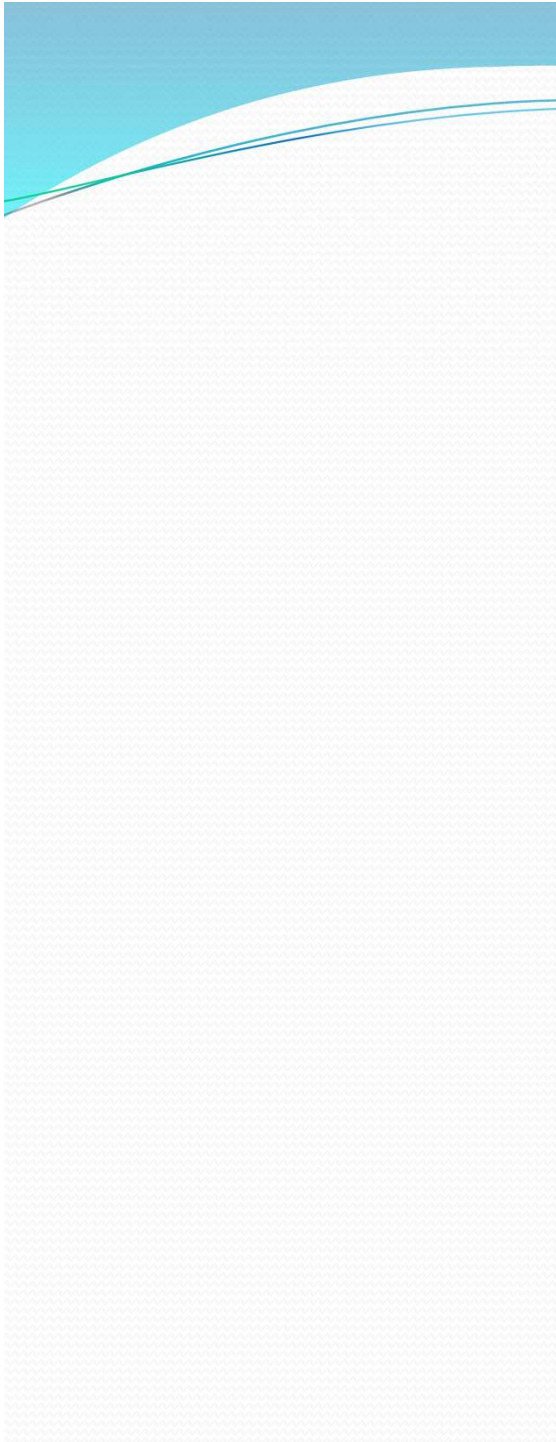
This volume is needed to make the test work

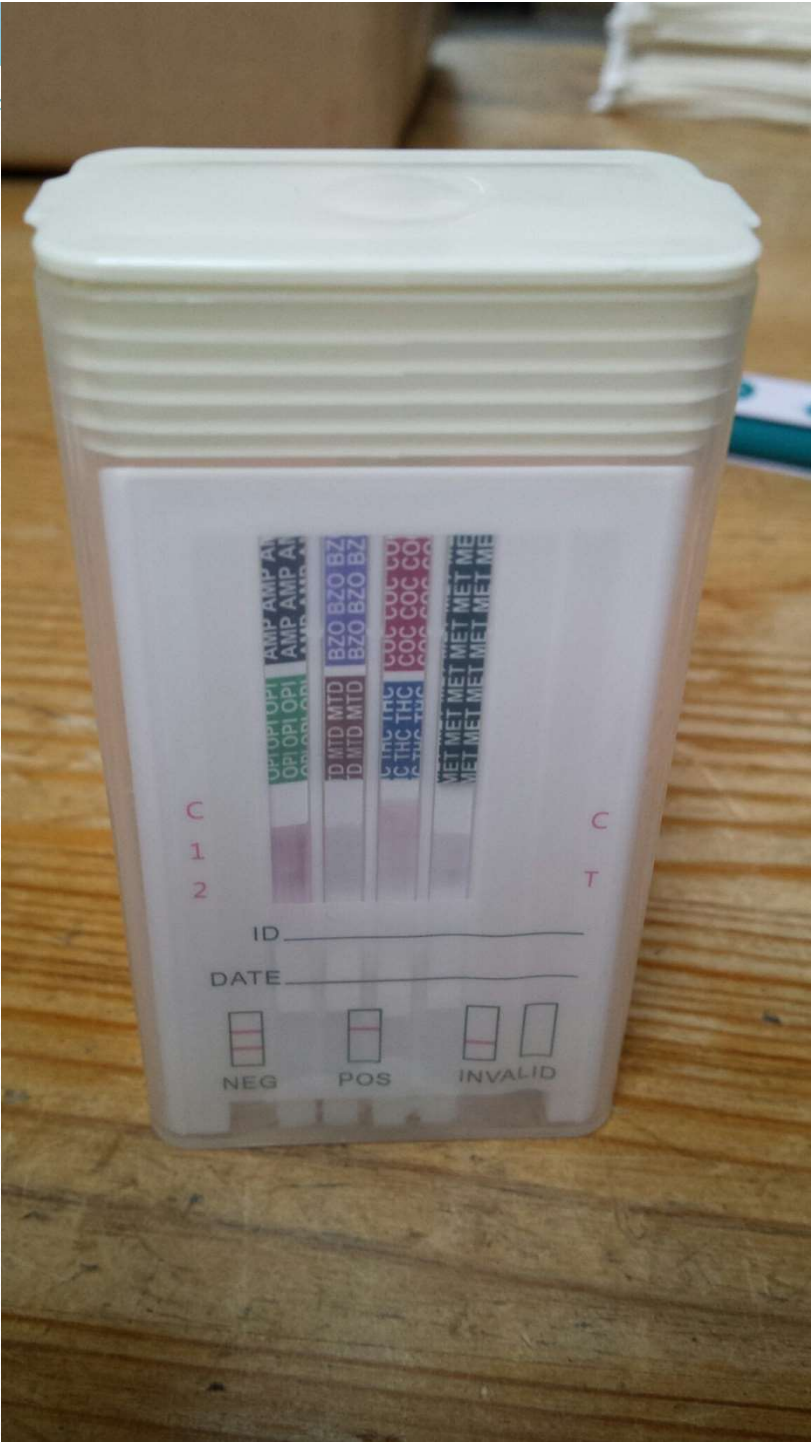
Insufficient volume will prevent ALL of the test control lines being formed

Some donors have “dry mouth” so it may take 5 minutes to collect sufficient volume.

Swab shaft will turn pink when an adequate amount is collected







8 Test Plus Alcohol Foil Pouch

Alcohol

Amphetamine

Methamphetamine/MDMA

Cocaine

THC (Cannabis)

Opiates

Benzodiazepines

K2 – Spice

Tramadol

